

Commercial Land For Sale
739 N Getchell
Mike Casey 443-0333 cell 439-3744

MLS # 272603

Price: \$225,000

Owner: Doral Management Ltd., Jim Wolfe

Parcel ID # 05-1888-30-2150-9000

Legal Description: Getchell and Child Placer, S30, T10, N, R03 W, Getchell street condos

Total Sq Ft of Lot: 22,000

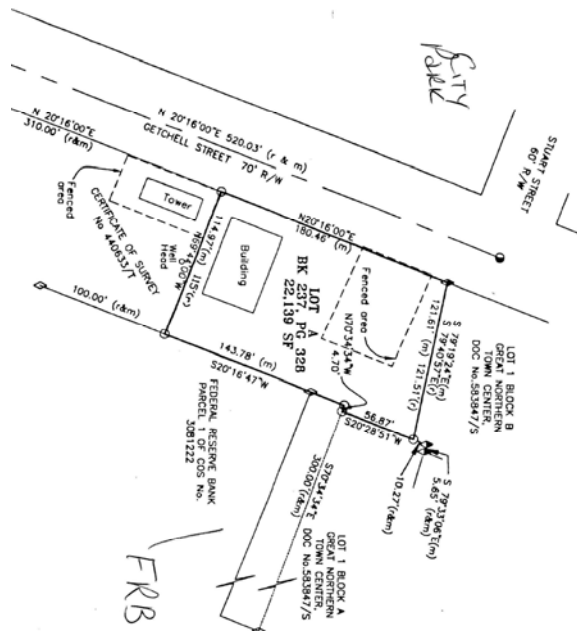
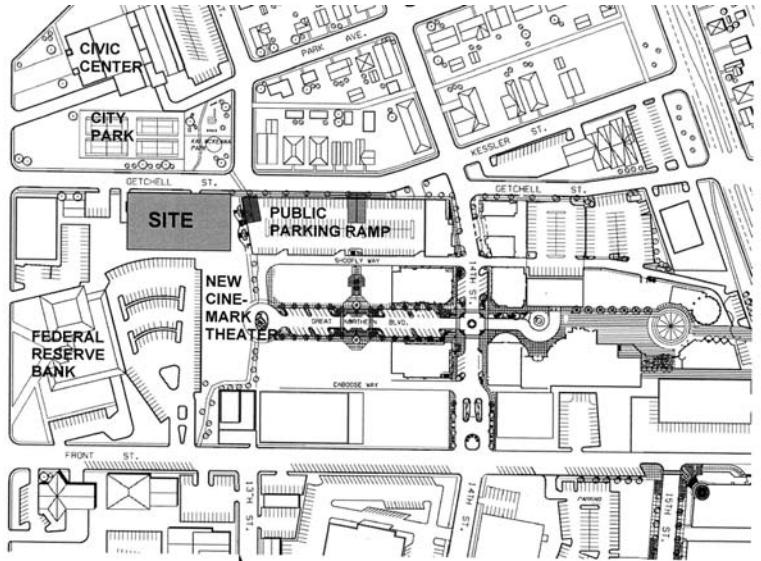
Tax Bill: \$6,108

Tax Year: 2008

Amenities:

- Gas and electricity to property
- City water
- Pedestrian friendly streetscape
- Street trees
- Sidewalks
- Lighting
- Oversized Lot
- Excellent lot for urban development
- Adjacent to theatre; city parking garage
- Central business district

Showing Instructions: call Trimac Group office for showing. 443-0333



LOCATION INFORMATION:

- B-2- Zoned for mix use-commercial
- Borders Great Northern Town center & public parking garage.
- Near Civic Center, north of Neill Ave, East of Stuart

DOCUMENTS ON FILE & COMMENTS:

- Legal Description, Survey, Topography Map, Aerial Photos, Zoning
- Engineering and architectural plans available for 4000 sq ft office with residential condominiums
- Previously considered mixed use condo and commercial space
- All reasonable offers will be considered